

25° North YACHTS

PRIVATE CHARTER

# NEVER BLUE

CUSTOM LINE 125



Miami · Bahamas · Florida Keys

DAY & TERM CHARTER

[25northyachts.com](https://25northyachts.com)

[hello@25northyachts.com](mailto:hello@25northyachts.com)

# Overview.

**NEVER BLUE is a 125-foot Ferretti Custom Line — a three-deck Italian superyacht delivered in 2018, styled inside and out by Francesco Paszkowski, and configured for term charters across the Bahamas and Florida Keys. Ten guests across five staterooms, six crew, and 270 gross tons of volume in a planing hull that cruises at 22 knots.**

Her profile is contemporary Custom Line — clean horizontal lines, expansive glazing, and a near-vertical bow that signals the volume within. Across three decks, NEVER BLUE balances the proportions of a much larger yacht with the easy handling of a planing hull, capable of fast Gulf Stream crossings and a 1,100-nautical-mile range.

On deck, indoor and outdoor living connect through full-height glass that opens the salon to a covered aft cockpit at the water's edge. Forward, a private foredeck terrace with sun pads and a jacuzzi doubles as a guest-only retreat. Above, the sun deck carries a wet bar, dining, and loungers under a hardtop — the social heart of the yacht.

Below and amidships, five staterooms accommodate up to ten guests overnight. The on-deck master is the showpiece — full-beam, with panoramic windows and a private outlook over the bow — joined by a VIP and three guest cabins configured between doubles and twins. Six crew, supervised by a USCG-licensed master, keep service continuous and discreet across the longest charter weeks.

Paszkowski's interior is warm and contemporary — light woods, natural stone, and full-height windows that pull the water inside. NEVER BLUE is captained by a USCG-licensed master and supported by a professional crew of six, with provisioning, route planning, and the logistics of a superyacht week handled in the background.

## Key features

---

**Ferretti Custom Line 125, 2018 build**

---

**Twin MTU diesels (2,640 hp each), 25 knot top speed**

---

**Five cabins — sleeps 10 overnight**

---

**On-deck full-beam master with bow outlook**

---

**Three decks of indoor and outdoor living**

---

**Foredeck terrace with jacuzzi and sun pads**

---

**Sun deck with wet bar and dining**

---

**Francesco Paszkowski interior and exterior design**

---

**270 GT volume, 1,100 nm range**

---

**Six professional crew**

---

**USCG-licensed captain**

---

**Bahamas-capable, Gulf Stream rated**

---

# NEVER BLUE

EXTERIOR

AERIAL



PROFILE



RUNNING SHOT



AT SEA



# NEVER BLUE

AT SEA

UNDERWAY



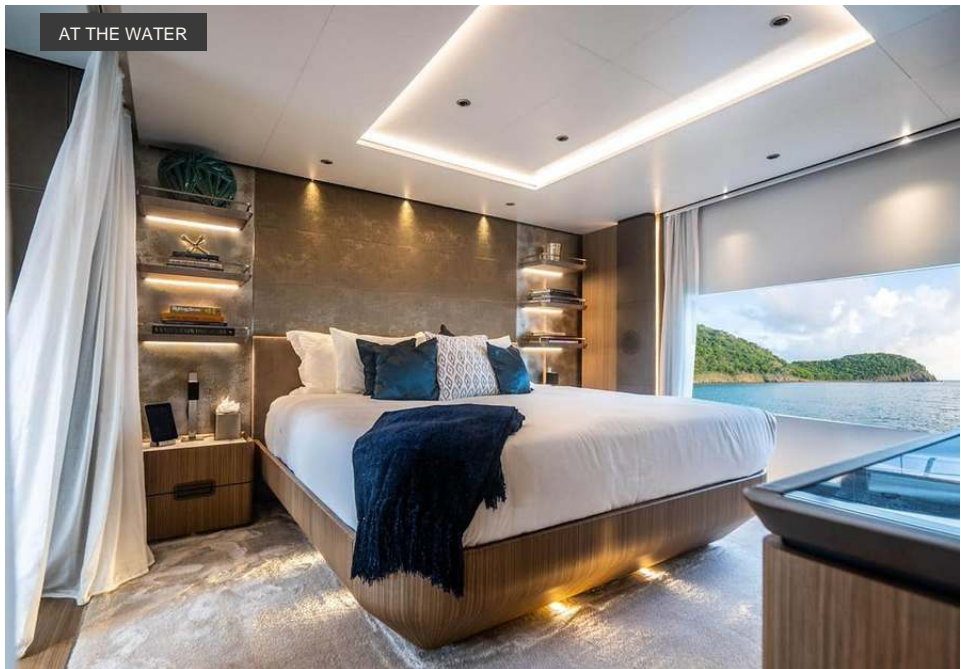
FROM ABOVE



DECK DETAIL



AT THE WATER

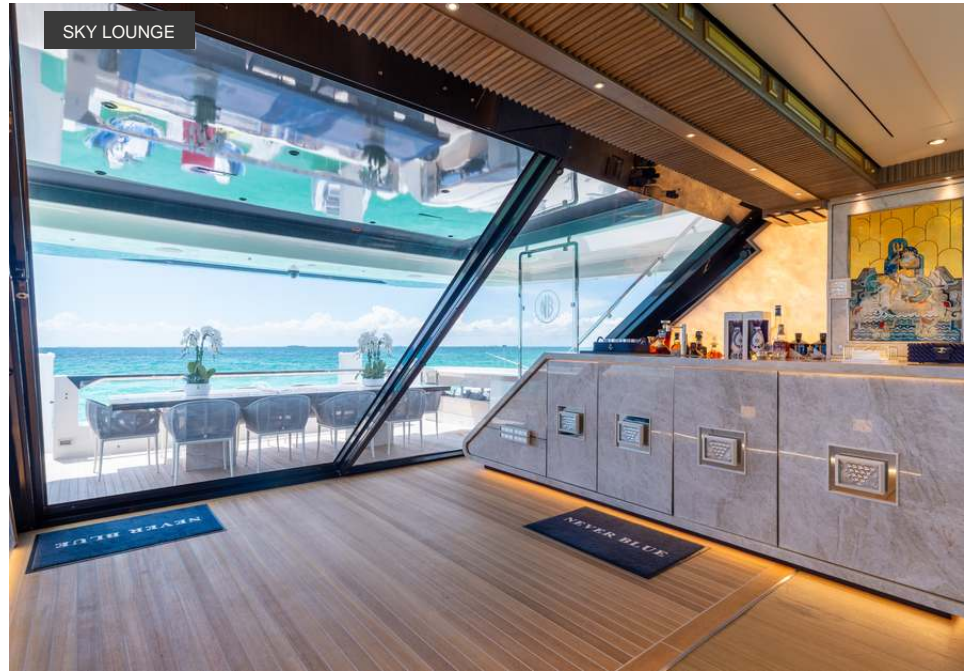


NEVER BLUE

MAIN DECK



**NEVER BLUE**  
INTERIOR



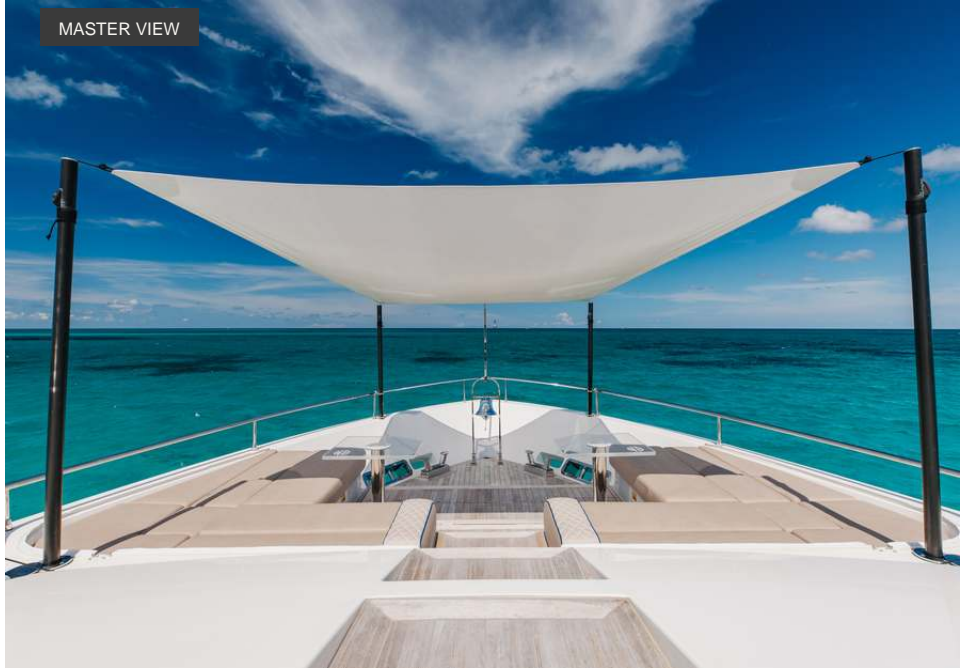
# NEVER BLUE

MASTER & VIP

MASTER STATEROOM



MASTER VIEW



VIP CABIN



MASTER BATH



**NEVER BLUE**  
GUEST CABINS



GUEST CABIN



TWIN CABIN

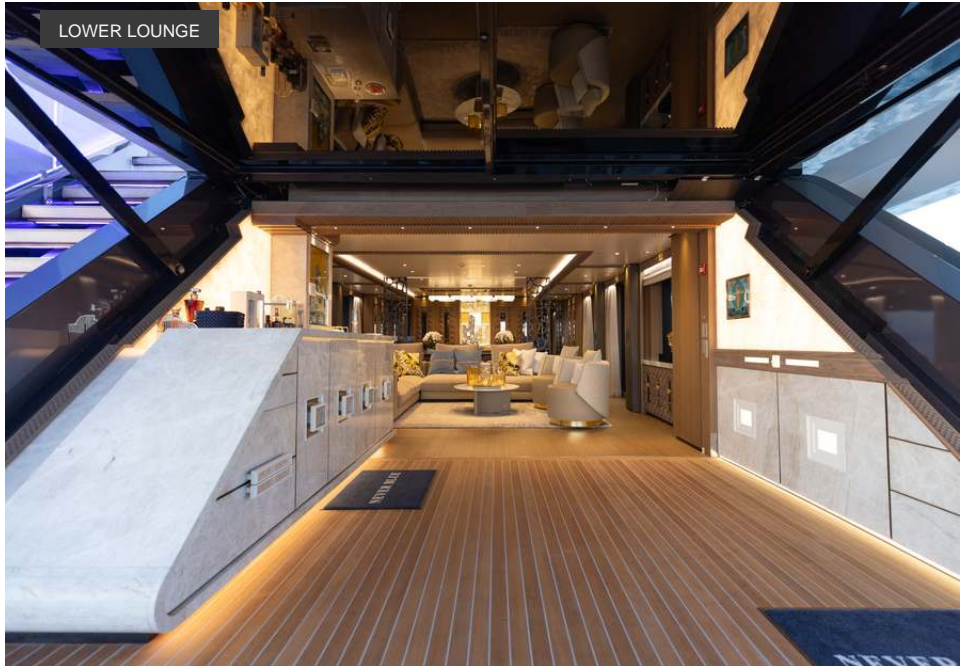
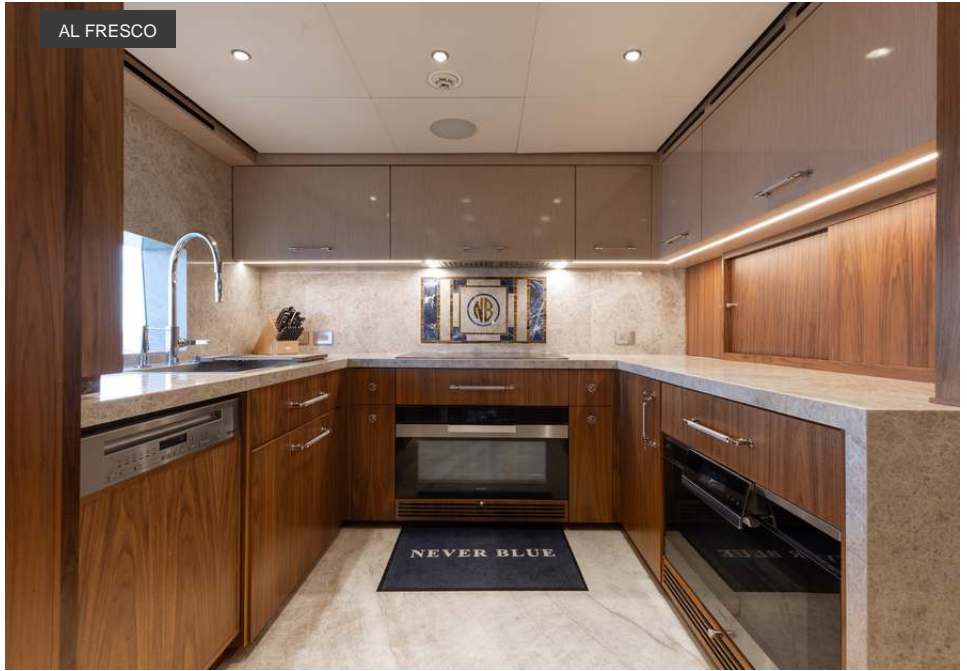


CABIN DETAIL



EN-SUITE

**NEVER BLUE**  
ONBOARD



# Specification.

LENGTH  
**125 ft 10 in (38.36 m)**

BUILDER  
**Ferretti Custom Line**

MODEL  
**Custom Line 125 (CL120)**

BUILT  
**2018**

BEAM  
**25 ft (7.65 m)**

DRAFT  
**7.2 ft (2.2 m)**

CRUISING SPEED  
**22 knots**

MAXIMUM SPEED  
**25 knots**

ENGINES  
**Twin MTU (2,640 hp each)**

GUESTS (OVERNIGHT)  
**10**

GUESTS (DAY CHARTER)  
**13**

CABINS  
**5**

HEADS  
**[VERIFY]**

CREW  
**6**

HAILING PORT  
**Miami, Florida**

## Note

NEVER BLUE is configured for term charters across the Bahamas, Florida Keys, and beyond from her home base in Miami. With 270 GT of volume and a 1,100-nm range, she is comfortably capable of multi-week itineraries through the Bahamas chain. Interior and exterior design by Francesco Paszkowski.



# Cruising grounds.

From her home berth in Miami, the NEVER BLUE reaches Miami's most coveted anchorages within minutes and the western Bahamas within hours. Below, itineraries representative of how guests charter the vessel today — see dedicated pages following for full Bahamas and Florida Keys term routes.

## Day Charter — Miami

Departure from Miami, cruise to Key Biscayne and Stiltsville, anchor at Nixon Beach sandbar, sunset return.

---

## Day Charter — Bahamas Crossing

Early departure to Bimini via the Gulf Stream, lunch and swimming at Honeymoon Harbour, return same evening.

---

## Long Weekend — Florida Keys

Three-night itinerary: Miami to Key Largo, Islamorada, and Marathon, with daily snorkeling and shoreside dining.

---

## Term Charter — The Abacos

Seven-night route: Miami to Bimini, Berry Islands, Great Harbour Cay, and Green Turtle Cay in the Abacos chain.

---

Every charter is built around how you want the day to feel — not a fixed itinerary.



# Bahamas Itinerary.

Seven nights across the western Bahamas, beginning and ending in Miami. A route built around clear water, sandbar lunches, and quiet anchorages — with optional flexibility for guests who want to stretch days into long weekends or extend into the Abacos.

## Day 1 — Miami to Bimini

Morning departure from Miami. Gulf Stream crossing to North Bimini (~50 nm). Lunch at Honeymoon Harbour with the friendly stingrays, overnight at Bimini Big Game Club marina or anchorage off Resorts World.

## Day 2 — Bimini Day & North Cat Cay

Snorkeling at the Sapona wreck or Bimini Road, beach day at Radio Beach, optional drift dive on the wall. Short evening run to North Cat Cay for sunset.

## Day 3 — Bimini to Berry Islands

Easterly crossing to Great Harbour Cay (~85 nm). Anchor at Great Stirrup Cay or Sugar Beach for swimming, sandbar at low tide, evening at the Beach Club.

## Day 4 — Berry Islands Day

Hoffman's Cay blue hole hike, beach lunch at Flo's Conch Bar, afternoon snorkeling at the Hoffman's reef. Anchor overnight in a quiet cove.

## Day 5 — Berry Islands to Nassau

Short southerly run (~35 nm) to Nassau or Rose Island. Atlantis daytime access (optional), dinner ashore on Paradise Island, overnight in marina.

## Day 6 — Nassau to Bimini

Return leg across the bank, lunch underway, overnight in Bimini for an early Gulf Stream crossing.

## Day 7 — Bimini to Miami

Morning Gulf Stream crossing back to Miami. Arrival mid-afternoon.

7 nights · ~310 nm · Miami → Bimini → Berry Islands → Nassau → Miami



# Florida Keys Itinerary.

Three to five nights down the Florida Reef tract, with reef snorkeling, sandbar afternoons, and shoreside dining at the Keys' best-known waterfront restaurants. A natural fit for guests who prefer to stay closer to home without sacrificing the cruising feel.

## Day 1 — Miami to Key Largo

Morning departure from Miami. Cruise south through Biscayne Bay, anchor for lunch at Elliott Key. Continue to Key Largo, overnight at Ocean Reef Club marina or anchor off Pennekamp.

## Day 2 — Key Largo & Molasses Reef

Morning snorkel at Molasses Reef and the Christ of the Abyss. Lunch underway, afternoon sandbar at Rodriguez Key. Sunset cocktails at anchor.

## Day 3 — Key Largo to Islamorada

Short run south (~25 nm) to Islamorada. Tarpon feeding at Robbie's, afternoon at Anne's Beach. Dinner at Morada Bay or Pierre's, overnight in marina.

## Day 4 — Islamorada to Marathon

Cruise through Channel Five to Marathon (~30 nm). Sombrero Reef snorkeling, lunch at Sunset Grille, afternoon at Sombrero Beach. Overnight in Marathon.

## Day 5 — Marathon to Miami

Return leg up the Atlantic side via Hawk Channel. Lunch underway, optional stop at the Stiltsville flats, arrival back in Miami mid-afternoon.

3–5 nights · ~130 nm · Miami → Key Largo → Islamorada → Marathon  
→ Miami



# Chartering NEVER BLUE.

## Day Charter

A single day, done properly. Departure from Miami between four and ten hours, with itineraries built around Key Biscayne, the Stiltsville flats, Nixon Beach sandbar, or a Gulf Stream crossing to Bimini. Captain, crew, and route planning included.

### RATES

---

Four hours	<b>\$22,000</b>
Six hours	<b>\$24,000</b>
Eight hours	<b>\$26,000</b>

Fuel, dockage, and gratuity not included. Provisioning available on request.

## Term Charter

Multi-night charters across the Bahamas and Florida Keys, with overnight accommodations across multiple cabins. The crew handles provisioning, route planning, shore-side reservations, and the small logistics that make the difference between a trip and a charter. See dedicated itinerary pages for full Bahamas and Florida Keys routes.

### RATES

---

## Inquire for all charter rates.

Pricing varies by season, itinerary, and duration. Contact [hello@25northyachts.com](mailto:hello@25northyachts.com) or +1 (832) 995-7199 for a tailored quote.

---

APA, fuel, dockage, and provisioning structured per industry standard.

# 25° North

Y A C H T S

Private charter on the 25th parallel.

---

## **Miami**

Miami, Florida

+1 (832) 995-7199

[hello@25northyachts.com](mailto:hello@25northyachts.com)

[25northyachts.com](https://25northyachts.com)

All particulars are given in good faith and are believed correct, but cannot be guaranteed. 25° North Yachts assumes no liability for errors or omissions.

Last updated: May 2026